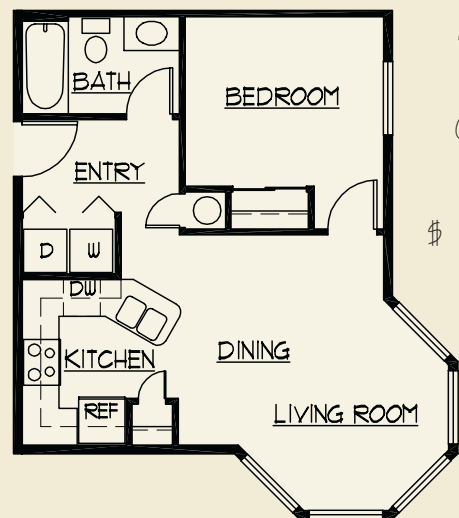


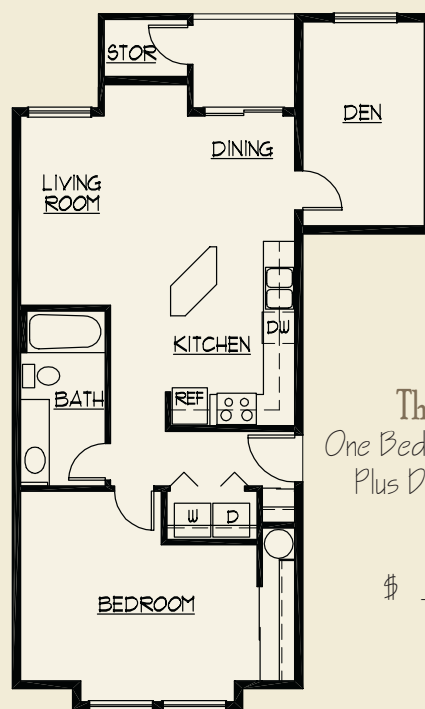
**The Knightsbridge**  
One Bedroom, One Bathroom  
661 Sq. Ft.

\$ \_\_\_\_\_



**The Chelsea**  
One Bedroom  
One Bathroom  
543 Sq. Ft.

\$ \_\_\_\_\_



**The Cambridge**  
One Bedroom, One Bathroom,  
Plus Den - Garden Style  
889 Sq. Ft.

\$ \_\_\_\_\_



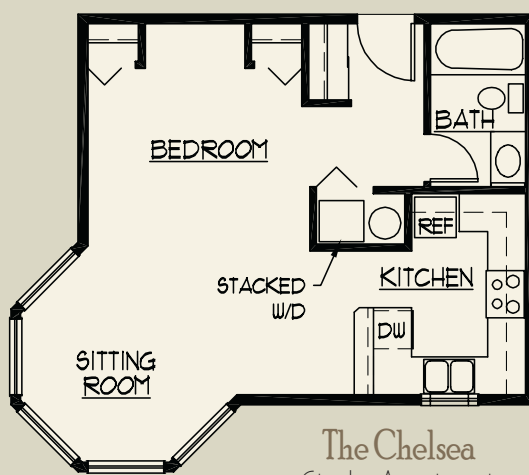
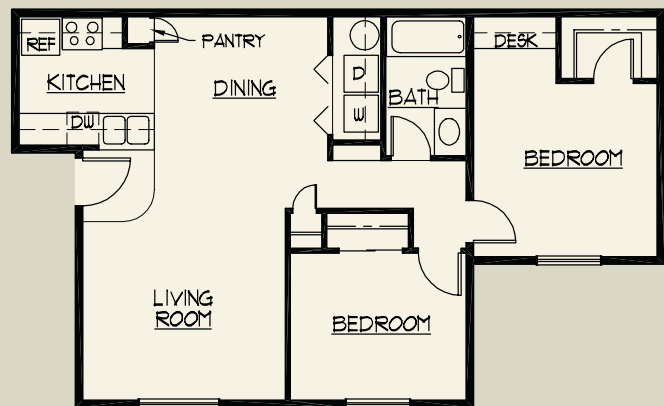
**The Mayfair**  
One Bedroom, One Bathroom,  
Without Den - Garden Style  
731 Sq. Ft.

\$ \_\_\_\_\_



**The Fremont**  
Two Bedroom, One Bathroom  
853 Sq. Ft.

\$ \_\_\_\_\_

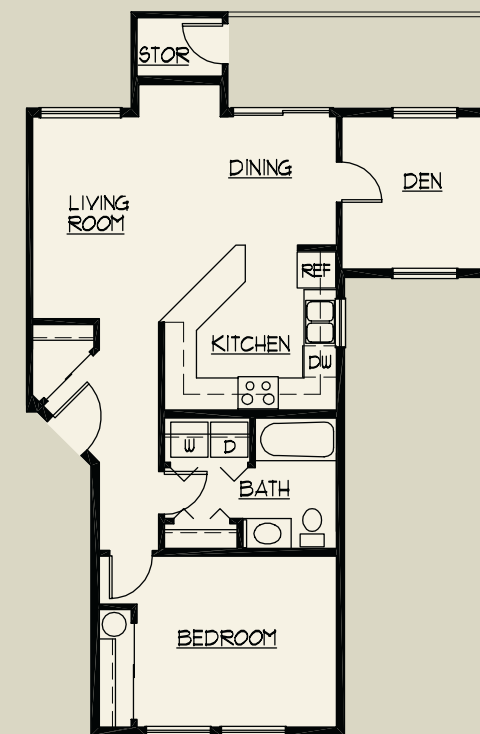


**The Chelsea**  
Studio Apartment  
543 Sq. Ft.

\$ \_\_\_\_\_

**The Oxford**  
One Bedroom, One Bathroom,  
Plus Den - Garden Style  
836 Sq. Ft.

\$ \_\_\_\_\_



## Features

### A true village atmosphere

- ☞ 14 acres
- ☞ large landscaped areas for outdoor enjoyment
- ☞ sidewalks
- ☞ play areas

Efficient hydronic natural gas heating

Custom oak cabinetry

Wood wrapped windows

Microwaves and washer/dryer in every unit

Whirlpool appliances

Built-in closet shelves

Apartment homes with decks and patios

Apartment homes with dens

Apartment homes with built-in desks and shelving

High quality construction, materials, and finishes throughout

Spacious and quiet apartment homes

Several floor plans to choose from

Close to BYU-Idaho Campus

High speed internet access

Cable service

Commitment to the satisfaction of our residents

## Amenities

### Large clubhouse featuring

- ☞ on-site management offices
- ☞ fitness center
- ☞ large lounge with fireplace and party kitchen
- ☞ billiard tables
- ☞ children's indoor play area
- ☞ multipurpose room
- ☞ computer center with workstations and printer
- ☞ media room with stadium style seating
- ☞ community activities calendar and newsletter

### Park-like setting featuring

- ☞ outdoor barbeques and picnic tables
- ☞ outdoor recreation areas
- ☞ children's playgrounds

Rental rate quotes are subject to change at any time.



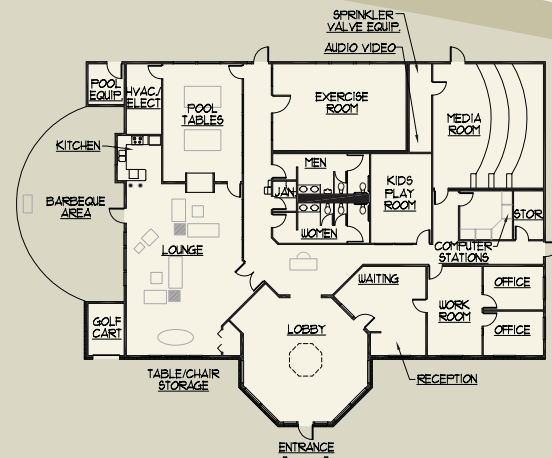
490 Pioneer Road  
Rexburg, Idaho 83440

## Driving Directions

**From North** - Take second Rexburg Exit (Hwy 33) Left on Hwy 33 under the overpass (West Main). Right on Pioneer Rd. Proceed approximately 1/2 mile. The Village is on the right hand side. 490 Pioneer Road.

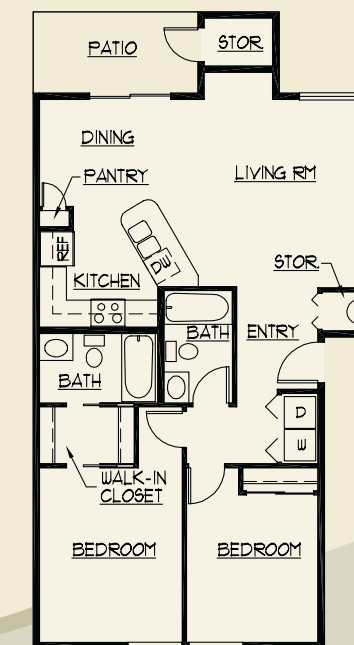
**From South** - Take first Rexburg Exit. Turn right at the light. Turn left on Yellowstone Hwy. and continue to the first light. Turn left onto Pioneer Road. Proceed approximately 1/4 mile to 490 Pioneer Road.

**From BYU-Idaho Campus** - Drive west on 7th South, and follow northwest as it turns into Pioneer Rd. The Village is on the left hand side. 490 Pioneer Road.



Come Home to  
The Village

Rexburg's  
Premier Apartment  
Home Community.



The St. James  
Two Bedroom, Two Bathroom,  
Garden Style  
972 Sq. Ft.

\$ \_\_\_\_\_

Phone 208.356.7786  
Fax 208.356.7791  
www.thevillage-rexburg.com

**WESTBROOK**  
REAL ESTATE DEVELOPMENT